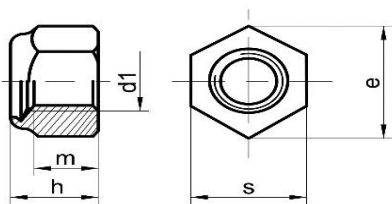


Kuusiomutterit Nyllok DIN 985 (ISO 10511)



Mitat

d1	M3	M4	M5	M6	M8	M10	M12	M14
h max.	4,0	5,0	5,0	6,0	8,0	10,0	12,0	14,0
m min.	2,4	2,9	3,2	4,0	5,5	6,5	8,0	9,5
s	5,5	7,0	8,0	10,0	13,0	17,0	19,0	22,0
e	6,0	7,7	8,8	11,0	14,4	18,9	21,1	24,5
Nousu	0,5	0,7	0,8	1,0	1,25	1,5	1,75	2,0

Likimääräinen paino kg/1000 kpl

KINEX

	0,5	1,0	1,4	2,4	5,1	11,0	17,0	26,0
--	-----	-----	-----	-----	-----	------	------	------

Mitat

d1	M16	M18	M20	M22	M24	M27	M30	M33
h max.	16,0	18,5	20,0	22,0	24,0	27,0	30,0	33,0
m min.	10,5	13,0	14,0	15,0	15,0	17,0	19,0	22,0
s	24,0	27,0	30,0	32,0	36,0	41,0	46,0	50,0
e	26,8	29,6	33,0	35,0	39,6	45,2	50,9	55,4
Nousu	2,0	2,5	2,5	2,5	3,0	3,0	3,5	3,5

Likimääräinen paino kg/1000 kpl

	34,0	45,0	65,0	75,0	100	160	210	320
--	------	------	------	------	-----	-----	-----	-----

Mitat

d1	M36	M39	M42	M45	M48
h max.	36,0	39,0	42,0	45,0	48,0
m min.	25,0	27,0	29,0	32,0	36,0
s	55,0	60,0	65,0	70,0	75,0
e	60,8	66,4	72,1	77,0	82,6
Nousu	4,0	4,0	4,5	4,5	5,0

Likimääräinen paino kg/1000 kpl

	420	520	620	720	820
--	-----	-----	-----	-----	-----